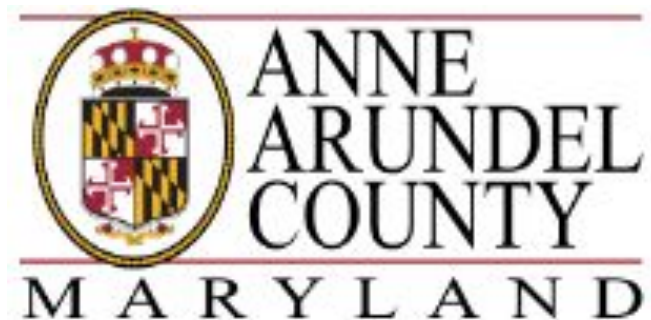


Overview of Partnership Between Bowie State University and Anne Arundel County

Crownsville Advisory Committee

May 30, 2024



Our History

- Founded in 1865 by the Baltimore Association for the Moral and Educational Improvement of Colored People
- Original mission: to train teachers for newly emancipated citizens
- Became Maryland Normal and Industrial School at Bowie in 1914
- Maryland Teachers College (1938), Bowie State College (1963)
- From liberal arts college to comprehensive university - Bowie State University (1988)
- Maryland's first historically black college or university (HBCU)

An Institution on the Move

- Over 6,400 students
- Bachelors, master's and doctoral degrees
- Top 20 (#16) HBCU and top 10 public HBCU (US News and World Report)
- Top 5 for graduating African-Americans with bachelor's degrees in **Nursing, Biology, and Computer/Information Sciences** (Diverse: Issues in Higher Education)
- National Security Agency Models of Excellence in Cyber Defense Education programs
- Undergraduate course-based research



Our Mission Demands Civic Responsibility

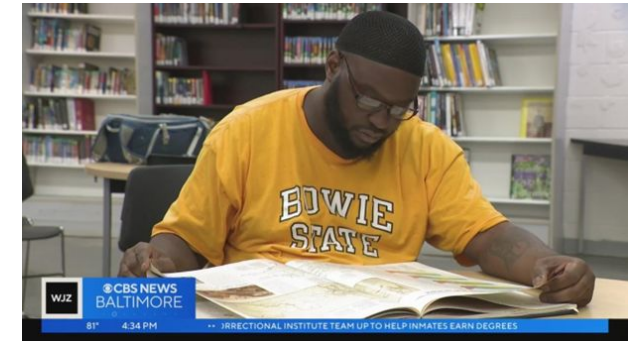
As Maryland's **first** historically black public university, Bowie State University empowers a diverse population of students to reach their potential by providing innovative academic programs and **transformational experiences** as they prepare for careers, lifelong learning, and civic responsibility...



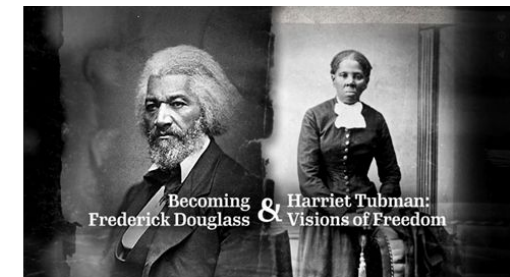
Biology Students Prepare to Address World Hunger and Global Food Security

MEDIA CONTACT: Cassandra Robinson, crobinson@bowiestate.edu, 301-860-4336

(BOWIE, Md.) – Bowie State University natural science students are discovering the benefits of the soilless agriculture techniques of hydroponics and aquaponics, processes that can expand the capacity to feed the world as traditional agriculture faces growing challenges from climate change and labor shortages.



BSU, the first HBCU to offer a college program in a Maryland state prison, highlighted by CBS News



Bowie State University becomes first historically black university to sponsor national PBS documentaries

Existing BSU Community-Based Initiatives

BSU engages in strategic partnerships, research, and public service to benefit our local, state, national, and global communities

- BSU Mission Statement





BSU and Crownsville Hospital - Historical Linkage

Baltimore Normal School No. 3, now Bowie State University, moved to the old Jericho Farm in Bowie, Maryland, in 1911. Just fifteen miles away, the first group of patients arrived at the Hospital for the Negro Insane of Maryland in Crownsville, Maryland, in the Spring of 1911.

- BSU Education students visited Crownsville (May 1955)
- BSU Professors selected the Crownsville site as the subject of a Scholars' English project
- Another cohort of BSU Scholars created a guide to Crownsville Hospital
- Crownsville was listed as an internship/practicum site for BSU students



Summary of MOU

- The relationship between BSU and Crownsville Hospital spans decades.
- Throughout the 1950s, BSU's school newspaper reported on site visits by the University to the hospital.
- BSU also conducted a study on mental health and overcrowding within the hospital.
- With this MOU in place, the County and Bowie State - Maryland's oldest HBCU - will collaborate on planning programming and educational initiatives focused on mental and physical health and wellness, environmental and agricultural science, library science, and historic preservation.



Summary of MOU

- The MOU outlines the scope of the collaboration between AACo and BSU.
- The partnership, built upon the historic relationship between BSU and Crownsville Hospital, will include collaboration on planning educational programming, historical research, internships, and initiatives focused on health and wellness at Crownsville Hospital.
- **Terms of Collaboration:**
 - Programming & Educational endeavors
 - Internship Opportunities
 - Resource Sharing
 - Evaluation Assessment



Summary of MOU

Duration:

- 3 years from date of signature (05/22/24- 05/22/27)

Amendment and Termination:

- Any amendments to the MOU will be made in writing and agreed upon by both parties. Either party may terminate the MOU upon providing written notice to the other party 30 days prior to the intended date of termination.

Governing Laws:

- The MOU will be governed in accordance with laws of the State of Maryland.



Incorporation into Planning Process

- Given its complex history and the promising potential associated with this property, this partnership aims to harness available resources, expertise, and knowledge of its associated entities and the community at large.
- The County agrees to actively engage BSU as a participant during the Crownsville Hospital Memorial Park master planning process and, as appropriate, future development opportunities.
- The master plan and public engagement processes will continue as planned.