



**DPW & YOU**

*Making a difference, together*



# Folger McKinsey Elementary School Safe Routes to School Accessibility Study: Existing Conditions and Recommendations

October 4, 2023

# Introductions

The screenshot shows the Anne Arundel County website. At the top, there is a navigation bar with links for News, Events, Jobs, Maps, OpenArundel, and Translate. Below this is the county logo and a search bar. The main content area is titled 'Capital Projects' and includes a sub-header 'Safe Routes to Schools'. A 'Project Documents / Videos' section is highlighted, listing various accessibility study reports and virtual public meetings. An orange arrow points from this section to a black square containing the Anne Arundel County logo.

News Events Jobs Maps OpenArundel Translate

ANNE ARUNDEL COUNTY MARYLAND

Services Government Departments Search

Home > Public Works > Bureau of Engineering

## Capital Projects

Explore projects that are funded through the budget process and being implemented around the County to improve the quality of life for our citizens.

← BACK TO PROJECT LIST

### Safe Routes to Schools

PROJECT NUMBER: H539616

**Project Class**  
Roads & Bridges (H1)

**Project Phase**  
Planning

**Project Description**  
This contract will study existing conditions and prioritizing infrastructure improvements and meetings will occur for each of the 17 schools. 510-957-30457, PIN 7291 676 738#????? Brooklyn McKinsey ES: 10/4/23, 6:00-7:00pm -- meet.google.com/ghr-gcsa-yfd; dial-in -- 563-4...

**Project Documents / Videos**

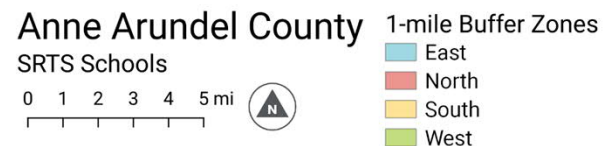
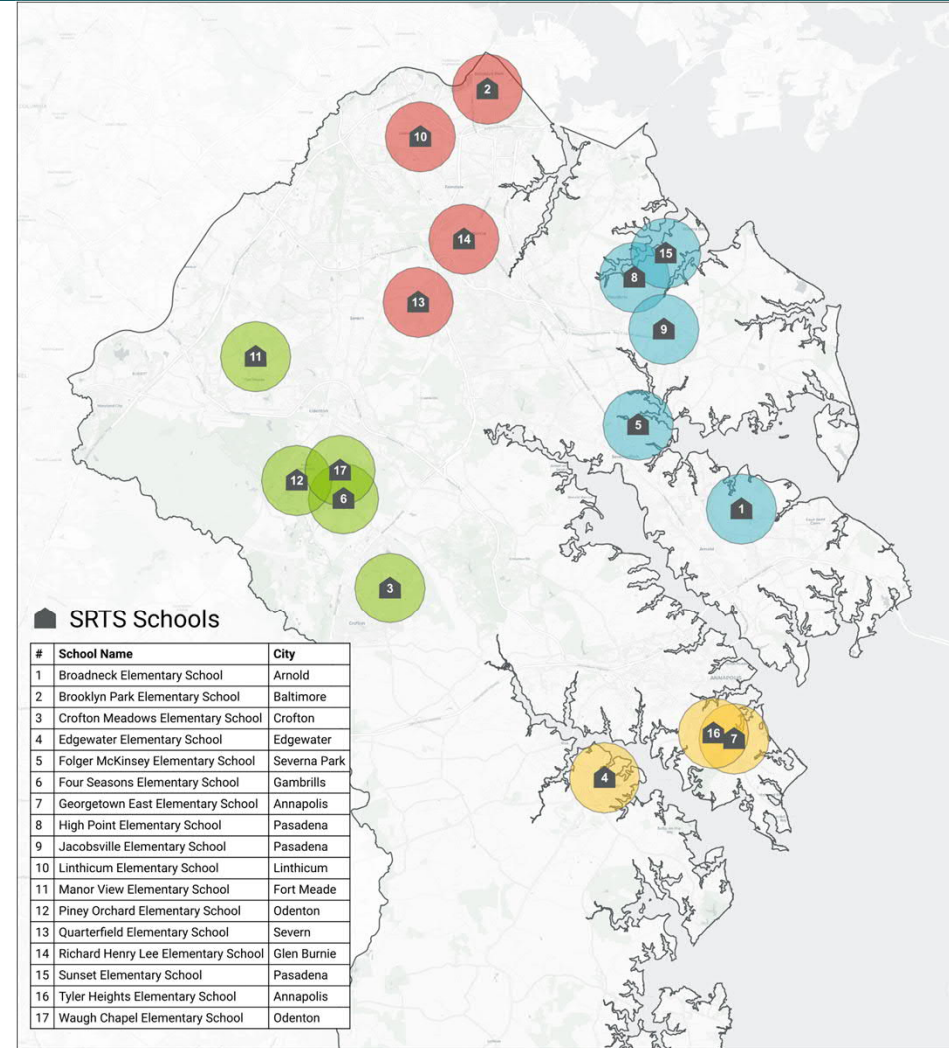
- SRTS Virtual Public Meetings - Schedule and Links.pdf
- Accessibility Study Report - Waugh Chapel ES.pdf
- Accessibility Study Report - Tyler Highes ES.pdf
- Accessibility Study Report - Sunset ES.pdf
- Accessibility Study Report - Richard Henry Lee ES.pdf
- Accessibility Study Report - Quarterfield ES.pdf
- Accessibility Study Report - Pinney Orchard ES.pdf
- Accessibility Study Report - Manor View ES.pdf
- Accessibility Study Report - Linthicum ES.pdf
- Accessibility Study Report - Jacobsville ES.pdf
- Accessibility Study Report - High Point ES.pdf
- Accessibility Study Report - Georgetown East ES.pdf
- Accessibility Study Report - Four Seasons ES.pdf
- Accessibility Study Report - Folger McKinsey ES.pdf
- Accessibility Study Report - Edgewater ES.pdf
- Accessibility Study Report - Crofton Meadows ES.pdf
- Accessibility Study Report - Brooklyn Park ES.pdf
- Accessibility Study Report - Broadneck ES.pdf

To view full report and provide input,  
please visit  
<https://tinyurl.com/srtsaacounty>

Adam Greenstein  
[pwgree08@aacounty.org](mailto:pwgree08@aacounty.org)  
410-222-7543

# Anne Arundel Safe Routes to School Accessibility Study

- Partnership between County and AACPS
- 17 schools, per *Move Anne Arundel!* – County Transportation Functional Master Plan.
- Oversight by County, State, and AACPS representatives.
- Focus: infrastructure within school walk zone, also assessed opportunities to expand active transportation to school
- Goal: improve safety and transportation choices for all school families



# Folger McKinsey Elementary Accessibility Study

Report findings are derived from:

<b>School site visits</b>	<ul style="list-style-type: none"><li>• Observed school arrival and dismissal – February 7, 2023</li><li>• Assessed pedestrian and bicycle infrastructure within school walk zone and roads immediately adjacent (as connectivity allows) – February 7, 2023</li></ul>
<b>Parent Survey</b>	<ul style="list-style-type: none"><li>• January 26 - February 19, 2023</li><li>• Available online: English, Spanish, Chinese, and Korean</li><li>• Survey link was provided via email</li></ul>

# Report Content

1. School overview
2. Parent-reported student travel modes and barriers
3. Arrival and dismissal observations
4. Existing infrastructure conditions
5. Crash data
6. Infrastructure recommendations
7. Programmatic recommendations
8. Appendix: Infrastructure recommendation photos

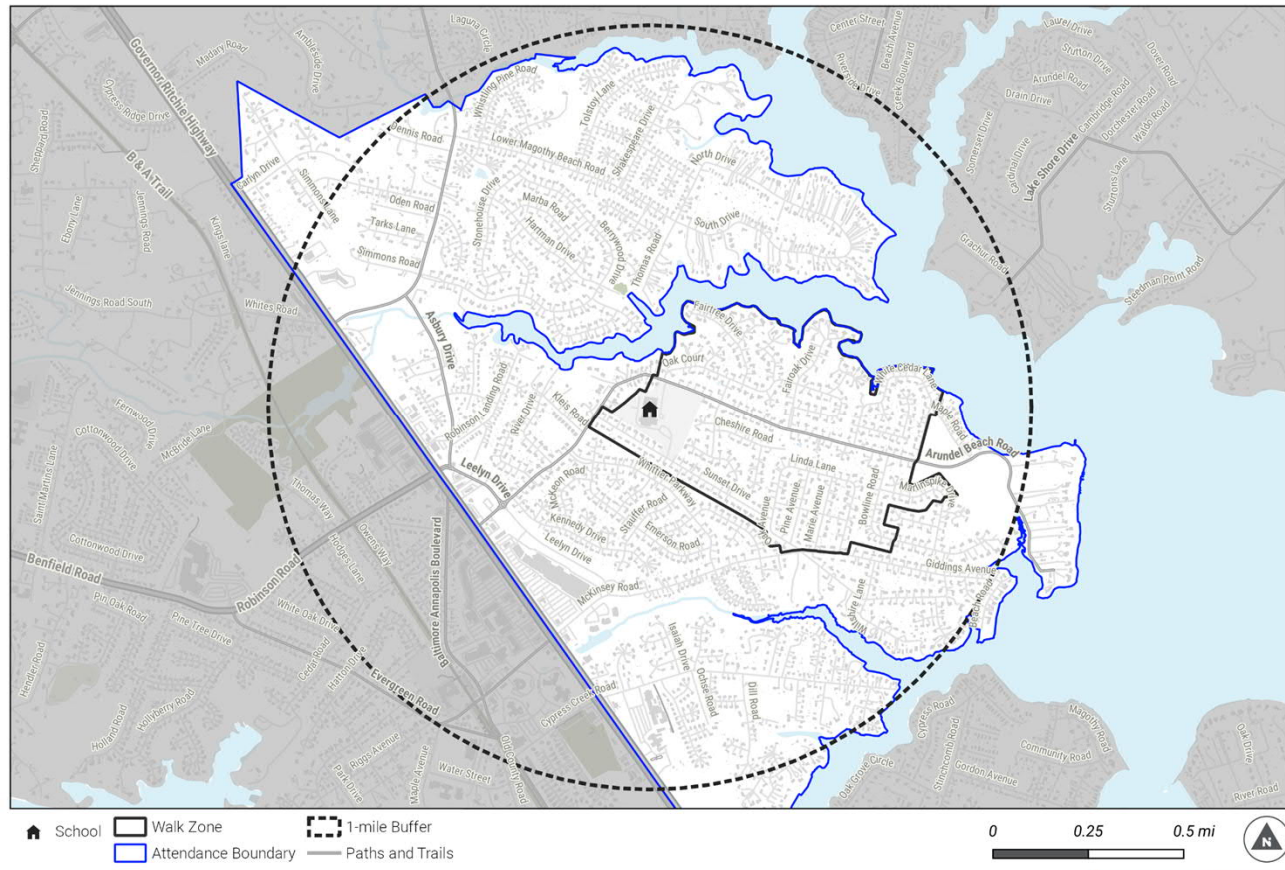
To view full report and provide input,  
please visit  
<https://tinyurl.com/srtsaacounty>



# School Overview Section

- Study area
- School attendance and enrollment
- School location and layout
- School access

Folger McKinsey Elementary School - 1-mile Radius



# Parent-Reported Student Travel Modes and Barriers Section

- Distance from home to school
- School bus eligibility and use
- Most common travel mode to school
- Ideal travel mode to school
- Barriers to walking or biking to school
- Streets used to walk or bike to school

Reported Distance from Home to School	
Distance	Number of Respondents
< ¼ mile	6
¼ mile – ½ mile	15
½ mile – 1 mile	21
1 mile – 1 ½ miles	16
>1 ½ miles	20

Folger McKinsey Elementary - 79 total survey responses received

## Arrival and Dismissal Observations Section

- Overview of operations
- General observations
- Arrival and dismissal observations by travel mode (walk, bike, school bus, parent drop-off)



Buses waiting to drop off students during arrival.

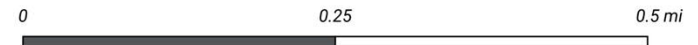
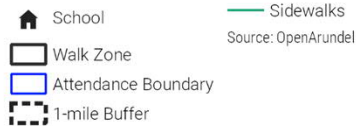
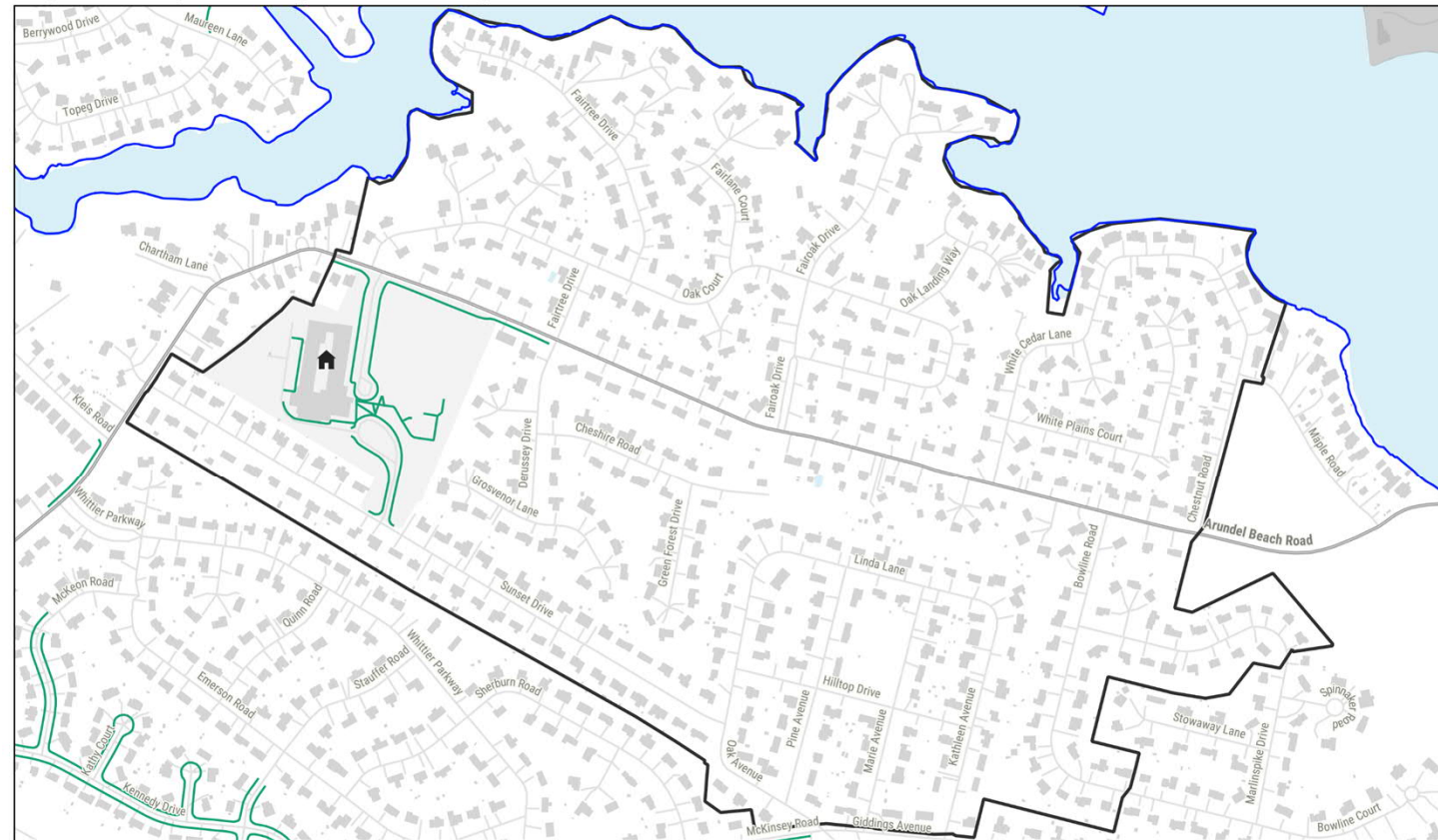


# Existing Infrastructure Conditions Section

- Sidewalks
- Marked crosswalks
- Curb ramps
- On-road bike facilities\*
- Regional trails, park trails, and paths\*

\*Existing, planned, or programmed

Folger McKinsey Elementary School - Existing Sidewalk Network



# Crash Data (2017 – 2021)

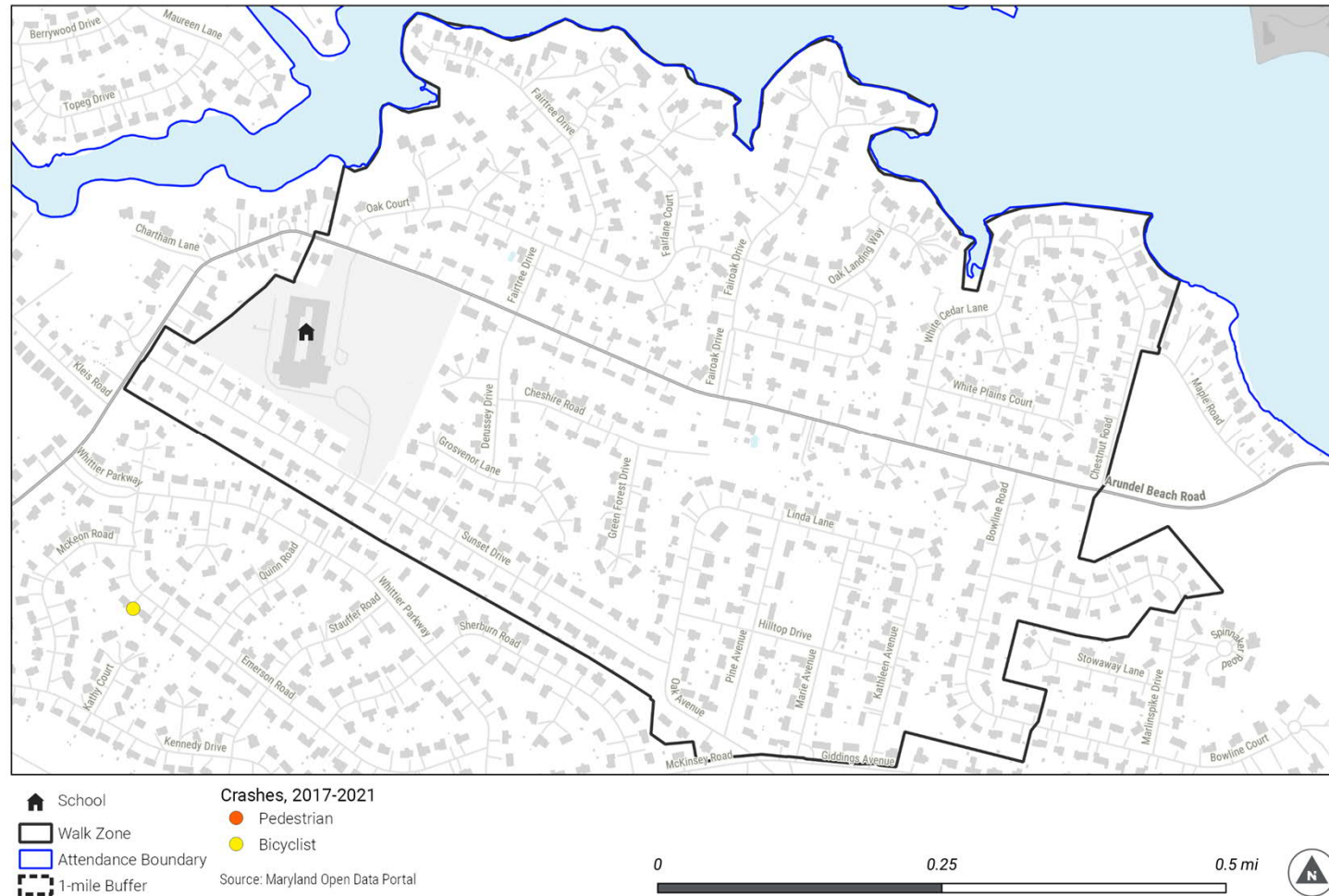
Crashes within 1-mile radius of the school:

- 752 total crashes (all modes), 2 fatal
- 18 pedestrian-involved crashes, 17 resulting in injury, 1 fatal
- 14 bicyclist-involved crashes, 10 resulting in injury, 0 fatal

Pedestrian and bicyclist crashes within the walk zone:

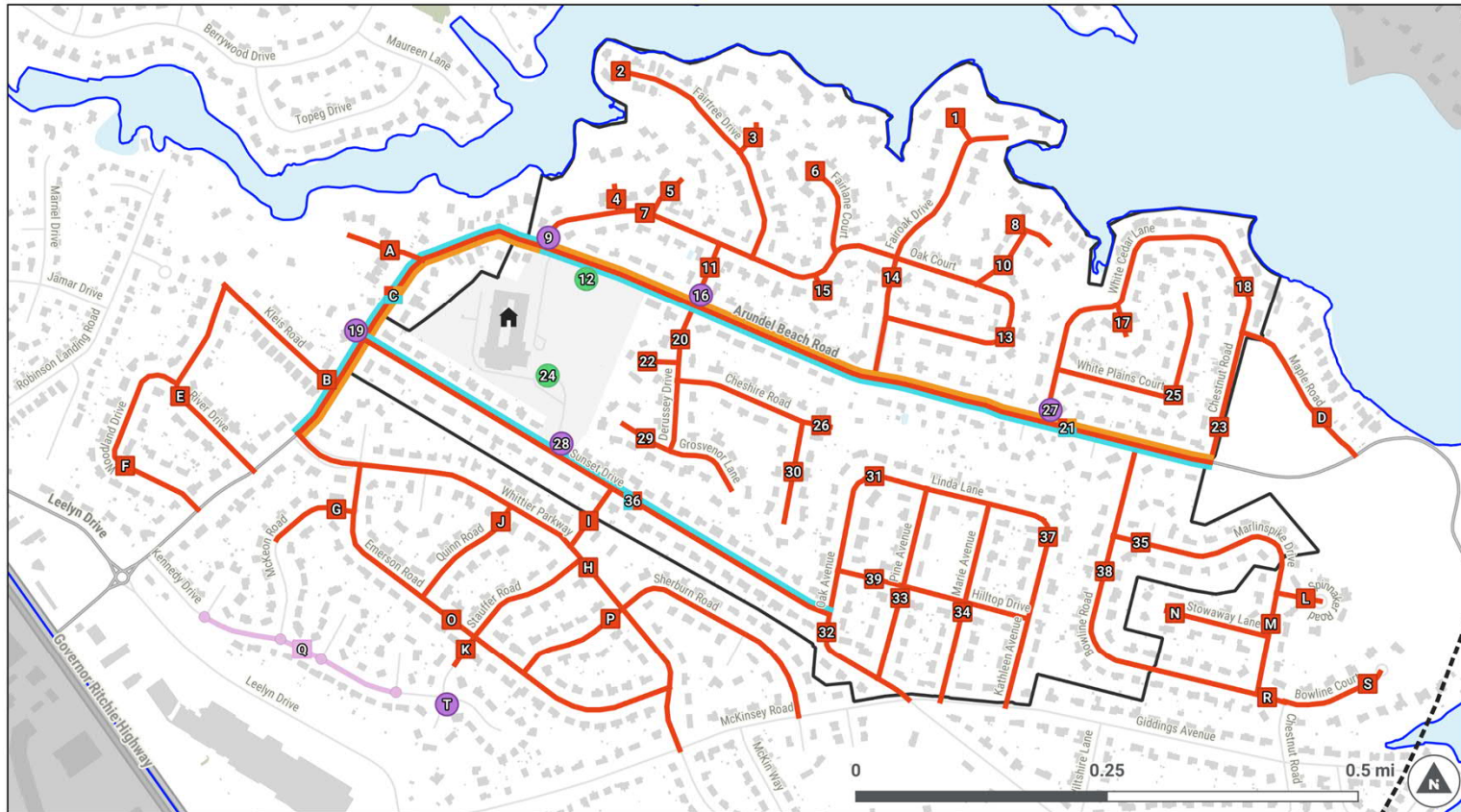
- 0 pedestrian-involved and 0 bicyclist-involved crashes occurred in the walk zone.

Folger McKinsey Elementary School - Pedestrian and Bicycle Crashes



# Infrastructure Recommendations Section

Folger McKinsey Elementary School - Recommendations





# Infrastructure Recommendations within the School Walk Zone

Information contained in this document is for planning purposes and should not be used for final design of any project. All results, recommendations, concept drawings, cost opinions, and commentary contained herein are based on limited data and information and on existing conditions that are subject to change. Further analysis and engineering design are necessary prior to implementing any of the recommendations contained herein.

Map ID	Location	Facility Type	Issue	Recommendation	Potential Cost	Timeframe*
1	Oak Cir (Fairoak Dr to cul-de-sac)	Sidewalk	Missing sidewalk on both sides	Install new sidewalk**	\$11,606	Long
2	Fairtree Dr (Oak Ct to end)	Sidewalk	Missing sidewalk on both sides	Install new sidewalk**	\$109,944	Long
3	Fairtree Plaza (Fairtree Dr to end)	Sidewalk	Missing sidewalk on both sides	Install new sidewalk**	\$14,221	Long
4	Winter Crest Ln (Oak Ct to end)	Sidewalk	Missing sidewalk on both sides	Install new sidewalk**	\$10,846	Long
5	Fairway Ct (Oak Ct to cul-de-sac)	Sidewalk	Missing sidewalk on both sides	Install new sidewalk**	\$19,039	Long
6	Fairlane Ct (Oak Ct to cul-de-sac)	Sidewalk	Missing sidewalk on both sides	Install new sidewalk**	\$41,366	Long
7	Oak Ct (Arundel Beach Rd to Fairoak Dr) (Along key student walking route, Inside school zone)	Sidewalk	Missing sidewalk on both sides	Install new sidewalk**	\$165,937	Long
8	Oak Landing Ct (end to end)	Sidewalk	Missing sidewalk on both sides	Install new sidewalk**	\$19,849	Long

\*Short (1 year), medium (2-3 years) or long term (3+ years)

\*\*Note that at locations where installation of new sidewalks is recommended, high-visibility crosswalks, ADA compliant curb ramps, and stop bars should be installed at intersecting streets to facilitate crossings and encourage motor vehicle yielding.

# Safe Routes to School (SRTS) Program Recommendations

*SRTS education can foster life-long skills for safe walking and bicycling. Education messages directed at the broader school community can help create safety role models and encourage safe driving.*

## Recommendations

**Provide pedestrian and bicycle safety education to students.** Conduct age-appropriate education regularly (e.g., annually). Provides opportunities for skills practice. This works best integrated into PE or Health curriculum.

**Conduct a bicycle rodeo.** Teach children skills related to walking and bicycling safely, which can increase student and parent confidence.

**Conduct parent and staff safety education campaign.** Distribute information packets to parents and school staff at the beginning of the school year with arrival/dismissal maps, rules and procedures for arrival/dismissal, and general safety info. Emphasize driving safely, being alert for pedestrians and bicyclists, and respecting school crossing guards.

**Provide walking and bicycling maps.** Show locations of pedestrian/bicycle infrastructure and estimated walk/bike times.

---

# INFRASTRUCTURE RECOMMENDATIONS within the School Walk Zone



Fairway Court



Fairlane Court



# Next Steps



- County will finalize prioritized list of recommendations.
- Implementation timeline and funding source will be based on the type of recommendation.
- Schedule yet to be determined.

To view full report and provide input,  
please visit  
<https://tinyurl.com/srtsaacounty>

Adam Greenstein  
[pwgree08@aacounty.org](mailto:pwgree08@aacounty.org)  
410-222-7543

# QUESTIONS OR COMMENTS?

SUBMIT USING

