



— *Making a difference, together* —

Safe Routes to Transit Study

Anne Arundel Project No. H590601
Stakeholder Outreach Session – Annapolis/Parole
January 14, 2025



DPWandYOU.com

Meeting Logistics

- 1 hour with minimum 15 minutes for Q&A and open discussion
- Please remain muted, but encouraged to turn camera on if comfortable
- Meeting will be recorded
 - Transcript (unedited)
 - Chat record
 - Audio-video
 - All content, plus PDF of slides, will be uploaded to project webpage (see chat)
- Chat feature – comments and questions
- Raise-hand feature

Meeting Overview

- Introductions
- Meeting Goals
- Project Overview
- Study Steps & Progress
- Next Steps
- Open Discussion / Q&A

Team Introductions

Project Manager

- Adam Greenstein | DPW Bureau of Engineering, Project Manager
 - adam.greenstein@aacounty.org
 - 443-569-9587

Interagency Departments & Divisions Represented

- County Office of Transportation
- County Department of Public Works
- County Office of Planning and Zoning
- Maryland Transit Administration
- Maryland State Highway Administration
- City of Annapolis

Study Consultant

- A. Morton Thomas and Associates, Inc.

Goal of this Meeting

- Inform community stakeholders about the project
- Provide update on activities completed
- Obtain your input on community issues and priorities
- Develop initial framework for upcoming public outreach



Project Overview | Purpose & Goals

- Improve access to transit stops through bicycle and pedestrian facility upgrades, including but not limited to:
 - *Providing ADA-compliant pedestrian access*
 - *Improving roadway crossings*
 - *Best practices for safer accommodations at stops*
- Prioritize geographic areas with populations of greatest need



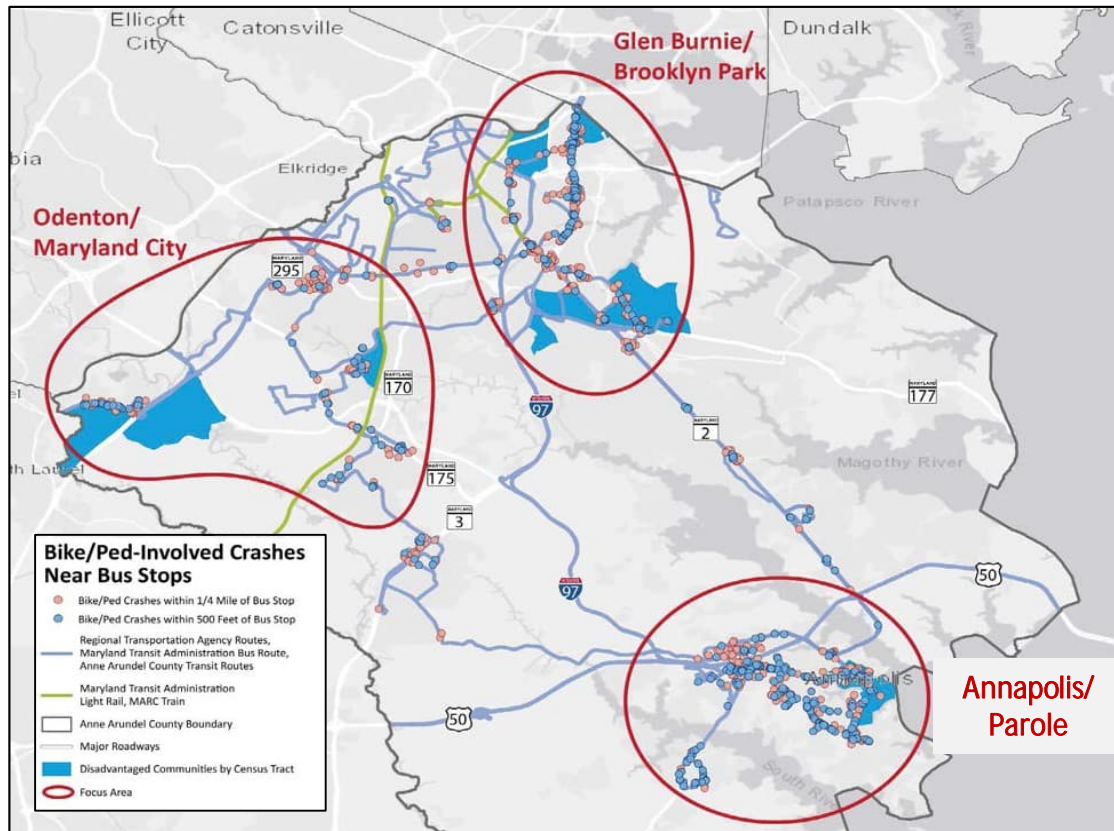
Bus stop with no infrastructure in Severn area

Project Overview | Funding

- Partially funded by USDOT Safe Streets and Roads for All (SS4A) grant
- SS4A grant program overview
 - *Purpose: Improve road safety by reducing and eventually eliminating roadway fatalities and serious injuries.*
 - *Focus: Development of comprehensive safety action plan and implementation for all users of the nation's roads.*
 - *Provides funding to local agencies to develop tools to strengthen a community's approach to road safety.*



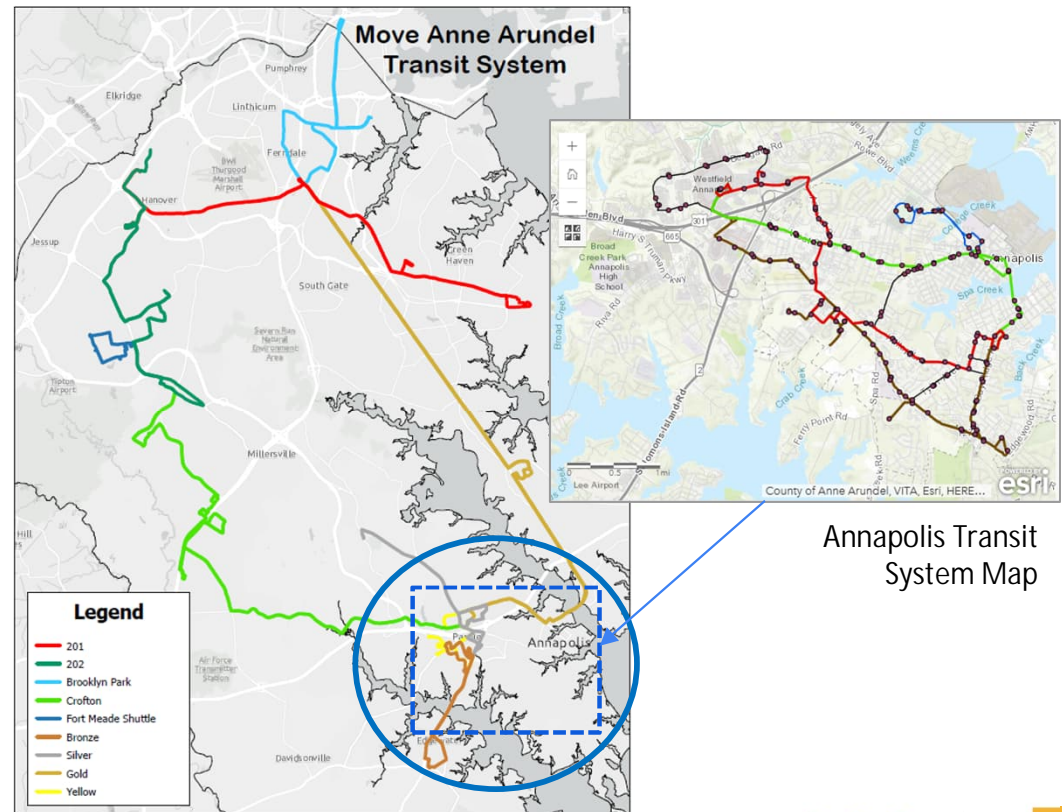
Project Overview | Study Area



- *Separate meetings are being held for each of the three geographic focus areas*

Project Overview | Transit Service Summary for A.A. County

- Four (4) fixed-route service providers within the County:
 - Anne Arundel County Transit
 - Annapolis Transit
 - Maryland Transit Administration (MTA)
 - Regional Transportation Agency of Central Maryland (RTA)



Anne Arundel County Transit System Map

**Safe Routes
to Transit**

Project Overview | Scope of Study

What is included

- Review and rating of bicycle/pedestrian infrastructure connections to transit stops/stations
- Development of recommended improvements, a prioritization method, and potential funding streams and implementation methods
- Development of a community-supported action plan for each area to maximize safe access and connectivity

What is not included

- Bus route changes
- Transit station (light rail, MARC) re-development plans
- Bus fleet improvements

Project Overview | Scope of Study

Improvements being considered:

- Sidewalks or shared-use path connections
- Curb ramps upgrades to meet ADA requirements
- Upgraded crosswalks at intersections or mid-block
- Relocated bus stops
- Landing pads
- Flashing beacons for warning signs
- Street lighting
- Benches and/or bicycle racks at bus stops

(Above list is not exhaustive)

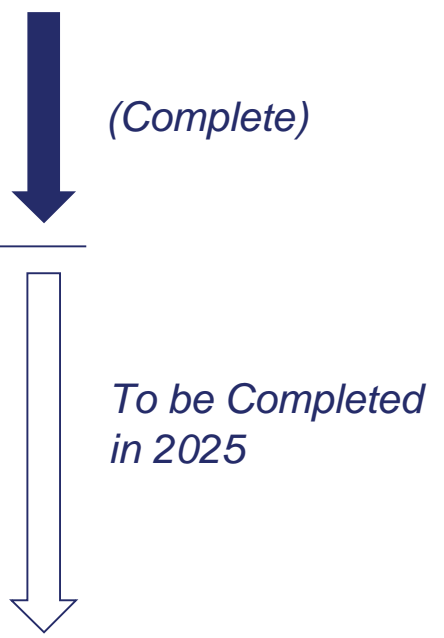


Example of bus stop with landing pad for boarding/alighting

Project Overview | Guiding Plans and Policy

- County Complete Streets Policy (2014)
- Move Anne Arundel! (Nov 2019) – Transportation Functional Master Plan
- County Vision Zero Plan (May 2022) – *To prevent all traffic-related fatalities and serious injuries in Anne Arundel County while increasing safe, healthy, and equitable mobility for all.*
- Walk and Roll Anne Arundel! (Jan 2023) – Pedestrian and Bicycle Master Plan
- County Transit Development Plan (June 2024)
- *Additional guidance from agency and industry partners*

Study Steps & Progress | Tasks

- Task 1 - Existing Conditions Assessment
 - Task 2 - Screening of Locations for Needed Improvements
 - Task 3 - Develop Initial Prioritization Method
-
- Task 4 - Obtain Stakeholder and Community Input
 - Task 5 - Refine Prioritization Method and Define Projects
Short-Term, Mid-Term, and Long-Term Improvements
 - Task 6 - Define Appropriate Programs and Funding for Projects
 - Task 7 - Compile Final Plan
- 
- (Complete)*
- To be Completed in 2025*

Study Steps & Progress | Task 1

The Existing Conditions Assessment reviewed and rated:

- Accessibility to and from bus stops and rail stations
- Proximity to and assessment of nearest street crossing and/or intersection
- Public Right-of-Way Accessibility Guidelines (PROWAG) / ADA Compliance (U.S. Access Board)
- Existing stop amenities (seating, lighting, etc.)
- Features that contribute to Bicycle Level of Traffic Stress (LTS) – a measure for assessing quality of roadway network for bicycle use

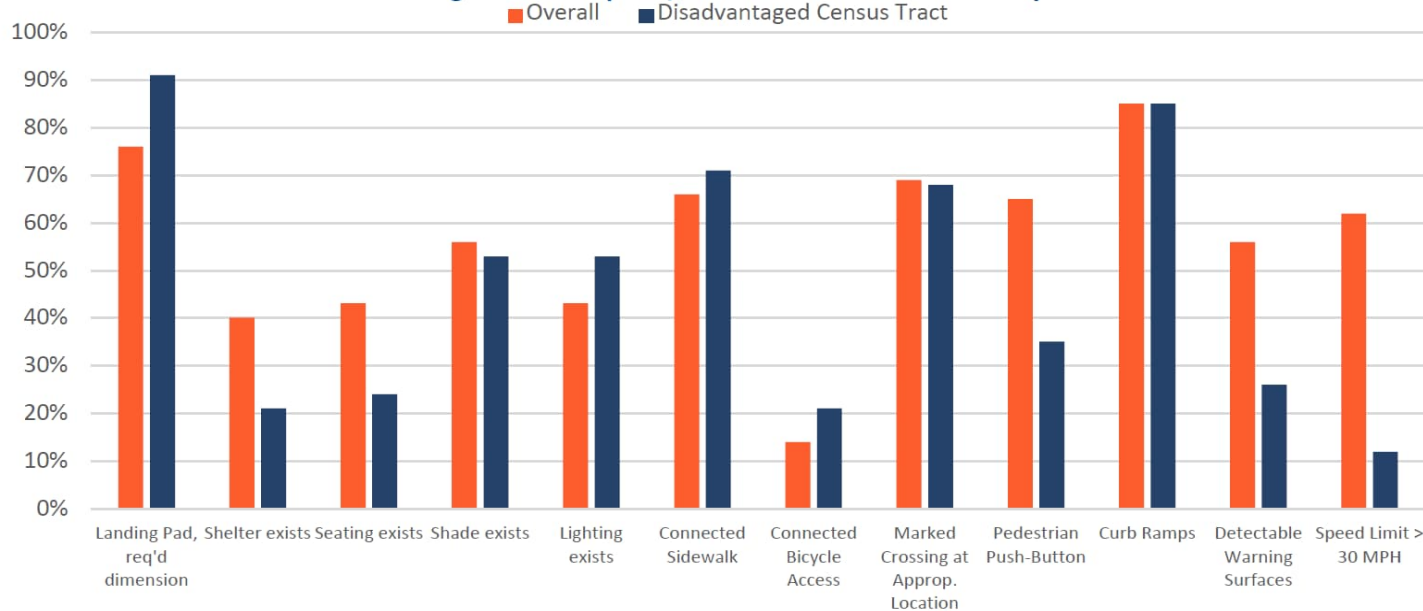


Sidewalk ramp ("ADA Ramp") does not meet standards

Study Steps & Progress | Task 2

Screening of Improvements Needed based on Existing Conditions Assessment

Figure 4: Annapolis /Parole Infrastructure Summary



- 178 bus stops and one (1) commuter park-and-ride* are within the Annapolis/Parole Area
- 34 bus stops and the commuter park-and-ride* serve neighborhoods within Disadvantaged Census Tracts

* Harry S. Truman Park-and-Ride

Study Steps & Progress | Task 3

Prioritization of Improvements will consider:

- **Safety** - higher priority given to locations with higher crash risk
- **Equity** - higher priority given to locations serving neighborhoods with greatest need for public transportation
- **Impact** - higher priority given to locations with highest ridership (actual or potential)
- **Community & Agency Requests** – additional priority given to locations identified by stakeholders or public agencies, including those identified in existing plans/studies

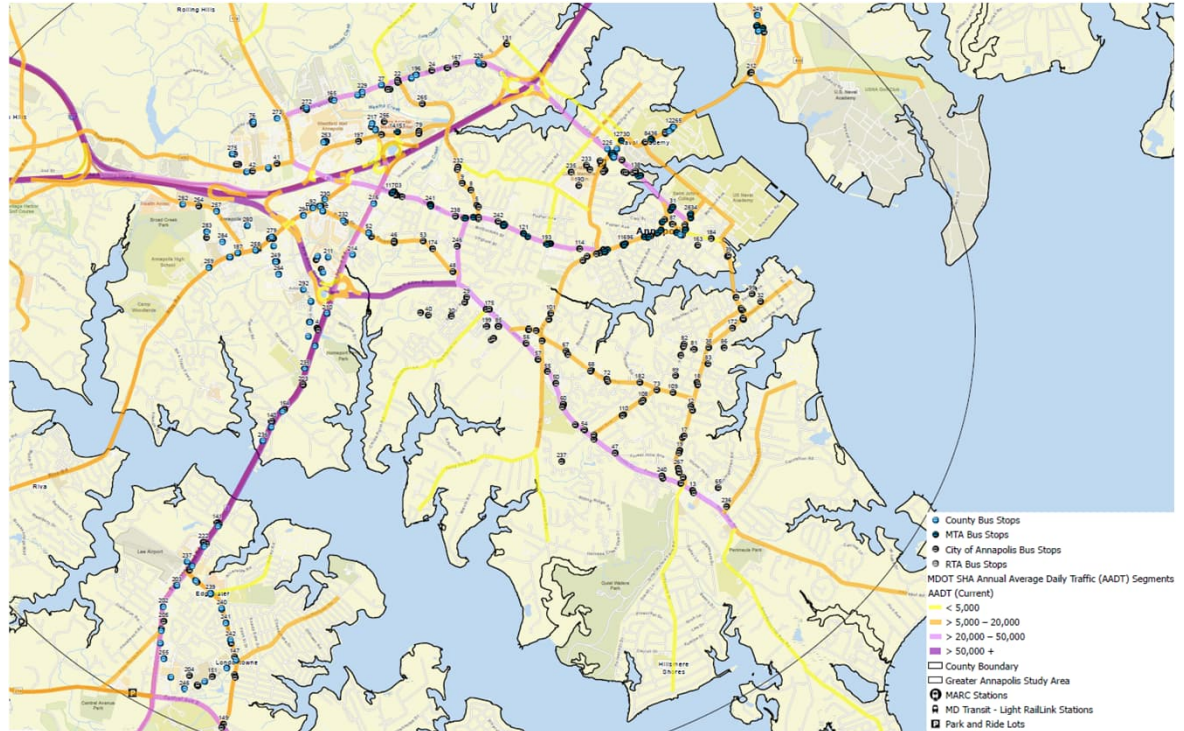
Public Outreach | Framework

- Hold at least one in-person meeting in each study area
- Gather feedback by various methods (US mail, e-mail, website)
- *Please share your suggestions*
 - *Locations*
 - *Outreach contacts*
 - *Key content*
 - *Format*



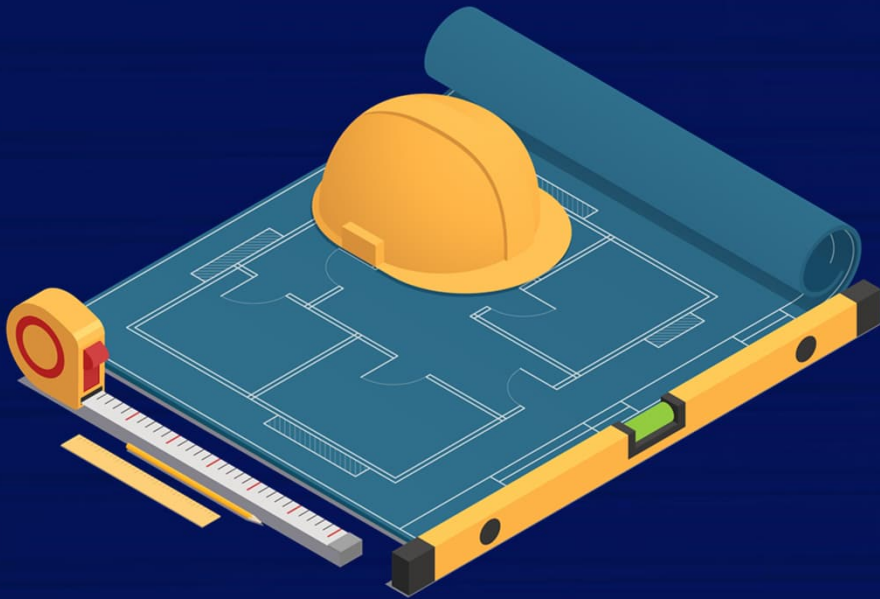
Next Steps

- Review and summarize community stakeholder input
- Hold open public meetings
- Incorporate public input into recommendations
- Refine prioritization method and confirm projects



Map of Annapolis/Parole Study Area Bus Stops

Open Discussion Questions & Answers



DPW&YOU

Follow DPW



FACEBOOK

@annearundeldpw



YOUTUBE

Anne Arundel County DPW



INSTAGRAM

@annearundelcountypw



LINKEDIN

Anne Arundel County
Department of Public Works



X

@AACoDPW



DPW & YOU



Bureau of Utility Operations

24-Hour Emergency Water Service:
(410) 222-8400
Billing Inquiries: (410) 222-1144



Bureau of Waste Management Services

Bulk Trash Service / Curbside Collections: (410) 222-6100



Bureau of Engineering

General Inquiries: (410) 222-7500



Bureau of Highways

General Inquiries: (410) 222-7321
Snow Line: (410) 222-4040
Email: hwyscustomercare@aacounty.org



Bureau of Watershed Protection and Restoration

General Inquiries: (410) 222-4240

Customer Relations

General Inquiries: (410) 222-7582
Email: pwcust00@aacounty.org



DPW & YOU