



DPW & YOU

Making a difference, together



Four Seasons Elementary School Safe Routes to School Accessibility Study: Existing Conditions and Recommendations

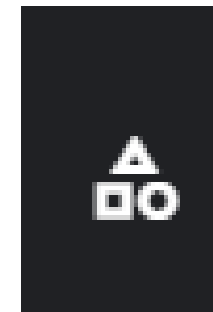
October 16, 2023

Introductions

The screenshot shows the Anne Arundel County website. At the top, there is a navigation bar with links for News, Events, Jobs, Maps, OpenArundel, and Translate. Below this is the county logo and a search bar. The main content area is titled 'Capital Projects' and includes a sub-header 'Safe Routes to Schools'. A 'Project Documents / Videos' section is highlighted, listing various accessibility study reports for different schools, such as 'Waugh Chapel ES.pdf', 'Tyler Heights ES.pdf', and 'Sunset ES.pdf'. A 'Project Description' section is also visible, mentioning a contract to study existing conditions and prioritize infrastructure improvements.

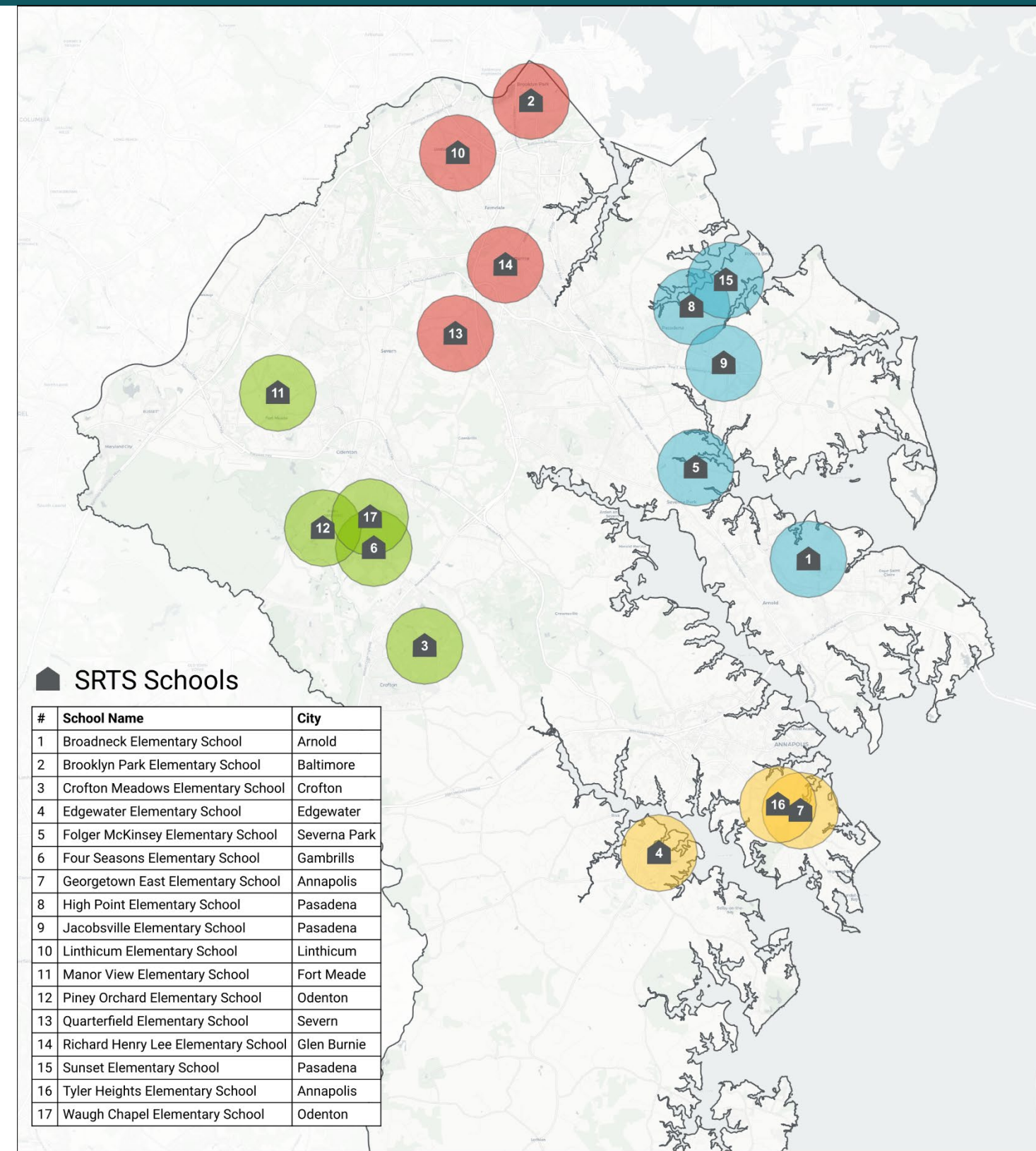
To view full report and provide input,
please visit
<https://tinyurl.com/srtsaacounty>

Adam Greenstein
pwgree08@aacounty.org
410-222-7543



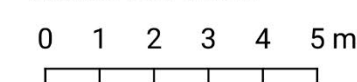
Anne Arundel Safe Routes to School Accessibility Study

- Partnership between County and AACPS
- 17 schools, per *Move Anne Arundel!* – County Transportation Functional Master Plan.
- Oversight by County, State, and AACPS representatives.
- Focus: infrastructure within school walk zone, also assessed opportunities to expand active transportation to school
- Goal: improve safety and transportation choices for all school families



Anne Arundel County 1-mile Buffer Zones

SRTS Schools



- East
- North
- South
- West

Four Seasons Elementary Accessibility Study

Report findings are derived from:

School site visits	<ul style="list-style-type: none">• Observed school arrival and dismissal – October 25, 2022• Assessed pedestrian and bicycle infrastructure within school walk zone and roads immediately adjacent (as connectivity allows) – October 25, 2022
Parent Survey	<ul style="list-style-type: none">• January 26 - February 19, 2023• Available online: English, Spanish, Chinese, and Korean• Survey link was provided via email

Report Content

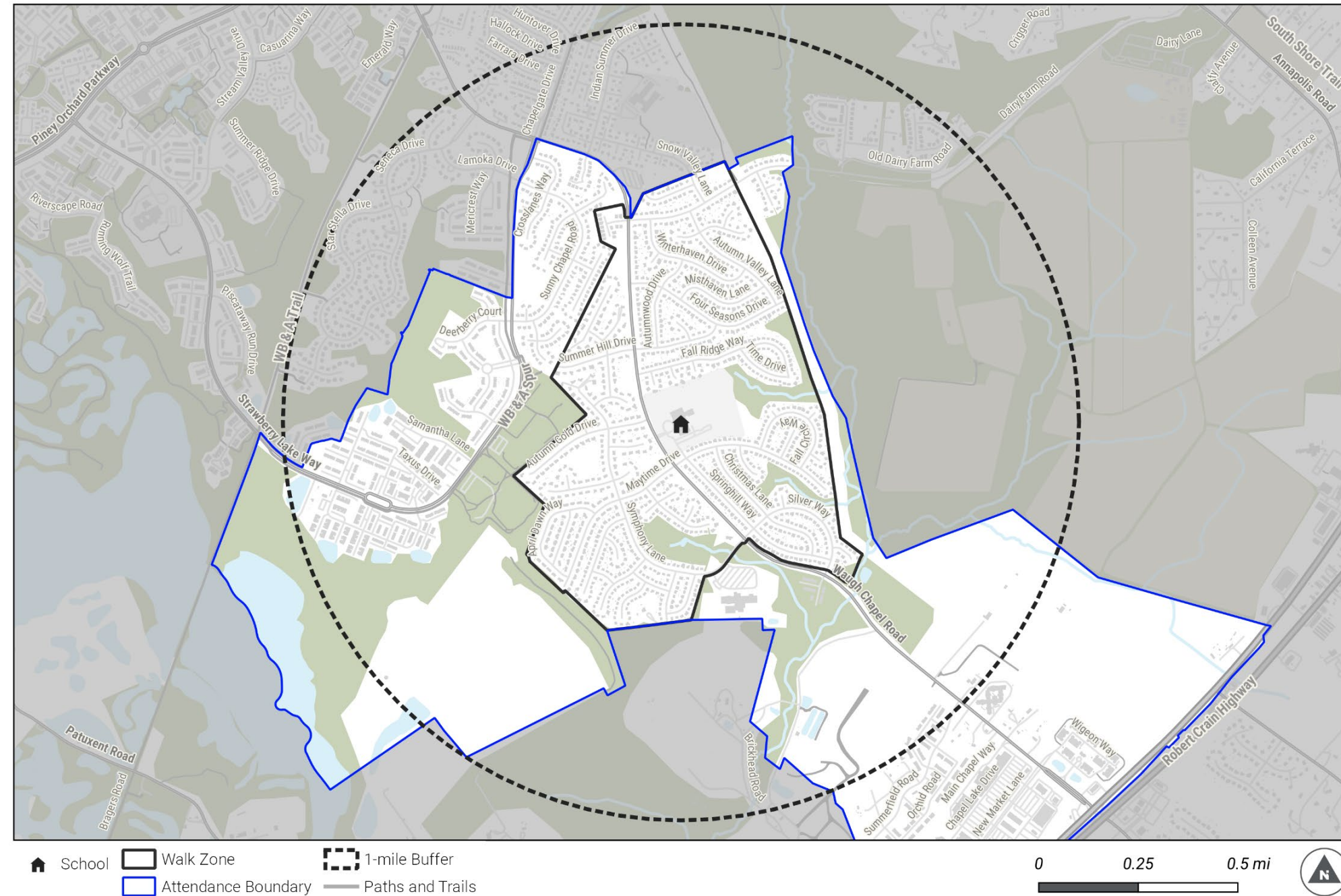
1. School overview
2. Parent-reported student travel modes and barriers
3. Arrival and dismissal observations
4. Existing infrastructure conditions
5. Crash data
6. Infrastructure recommendations
7. Programmatic recommendations
8. Appendix: Infrastructure recommendation photos

To view full report and provide input,
please visit
<https://tinyurl.com/srtsaacounty>

School Overview Section

- Study area
- School attendance and enrollment
- School location and layout
- School access

Four Seasons Elementary School - 1-mile Radius



Parent-Reported Student Travel Modes and Barriers Section

- Distance from home to school
- School bus eligibility and use
- Most common travel mode to school
- Ideal travel mode to school
- Barriers to walking or biking to school
- Streets used to walk or bike to school

Reported Distance from Home to School	
Distance	Number of Respondents
< ¼ mile	6
¼ mile – ½ mile	8
½ mile – 1 mile	20
1 mile – 1 ½ miles	16
>1 ½ miles	20

Four Seasons Elementary - 79 total survey responses received

Arrival and Dismissal Observations Section

- Overview of operations
- General observations
- Arrival and dismissal observations by travel mode (walk, bike, school bus, parent drop-off)



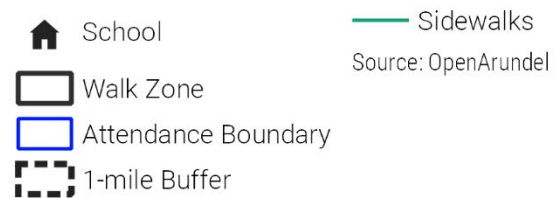
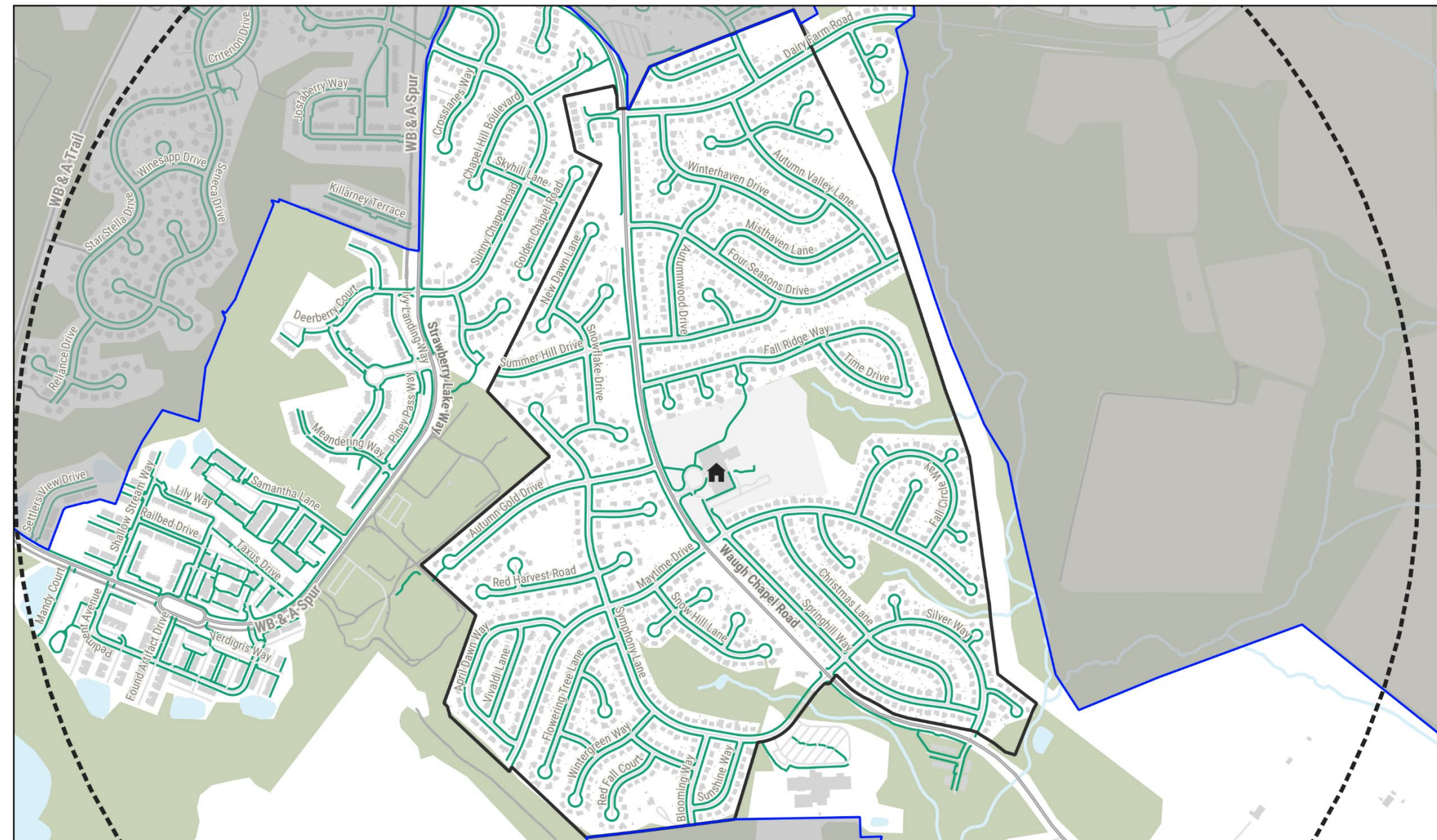
Entering and exiting parent drop-off at the intersection of Maytime Dr and Springhill Way

Existing Infrastructure Conditions Section

- Sidewalks
- Marked crosswalks
- Curb ramps
- On-road bike facilities*
- Regional trails, park trails, and paths*

**Existing, planned, or programmed*

Four Seasons Elementary School - Existing Sidewalk Network



Crash Data (2017 – 2021)

Crashes within 1-mile radius of the school:

- 152 total crashes (all modes)
- Four pedestrian-involved crashes, three resulting in injury.
- Three bicyclist-involved crashes, all resulting in injury

Pedestrian and bicyclist crashes within the walk zone:

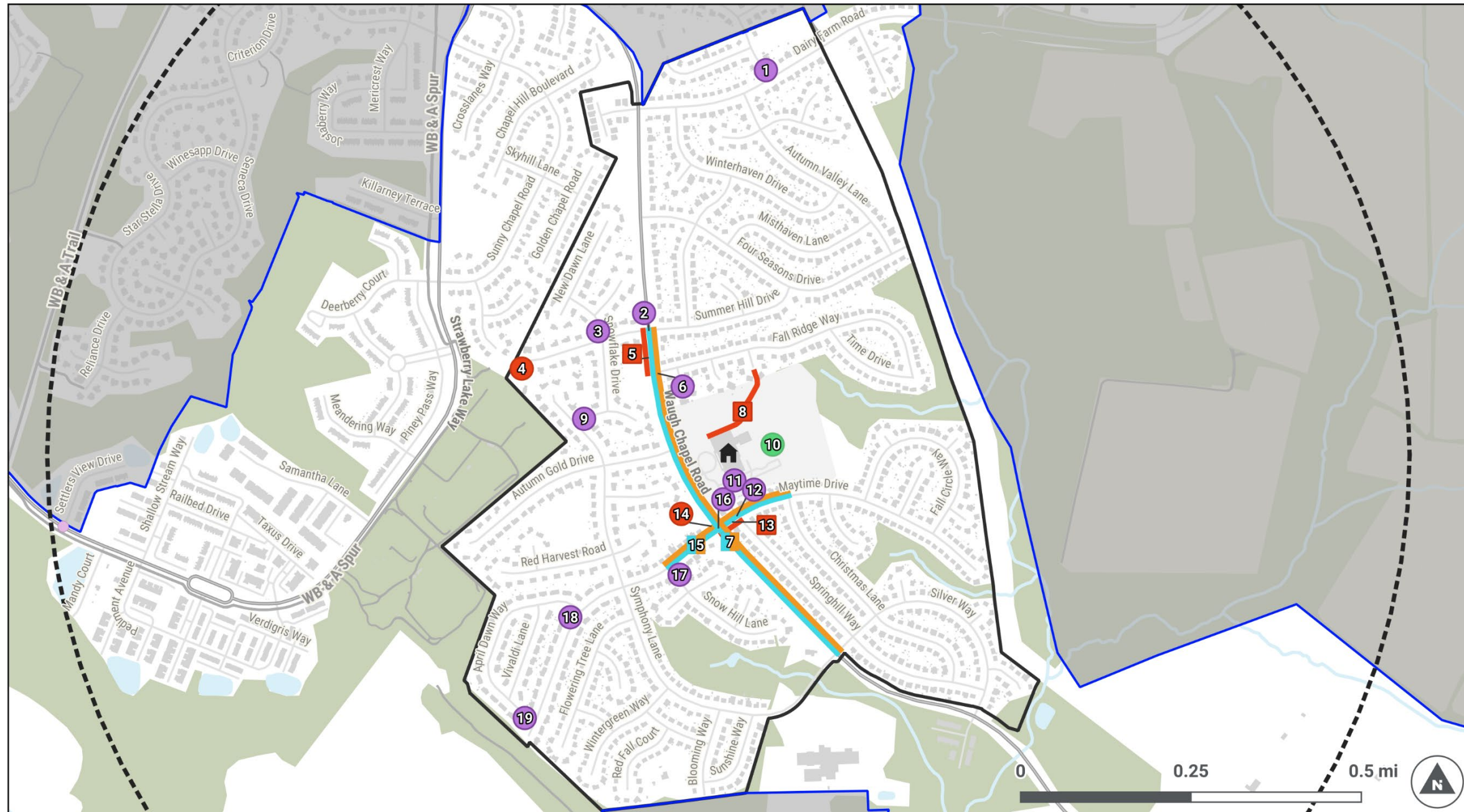
- None within the walk zone, but one pedestrian crash just outside the southeast boundary

Four Seasons Elementary School - Pedestrian and Bicycle Crashes



Infrastructure Recommendations Section

Four Seasons Elementary School - Recommendations



- | | | | |
|---------------------|---|---|--------------------------------|
| School | Spot Recommendations | Sidewalk | Segment Recommendations |
| Walk Zone | Access Management | Speed Management | Bicycle Facility |
| Attendance Boundary | Bicycle Rack | Other Recommendations | Corridor Intersection Upgrades |
| 1-mile Buffer | Intersection or Crossing | School Zone Signs and Pavement Markings | Speed Management |
| Paths and Trails | School Zone Signs and Pavement Markings | Sidewalk | |

Infrastructure Recommendations within the School Walk Zone

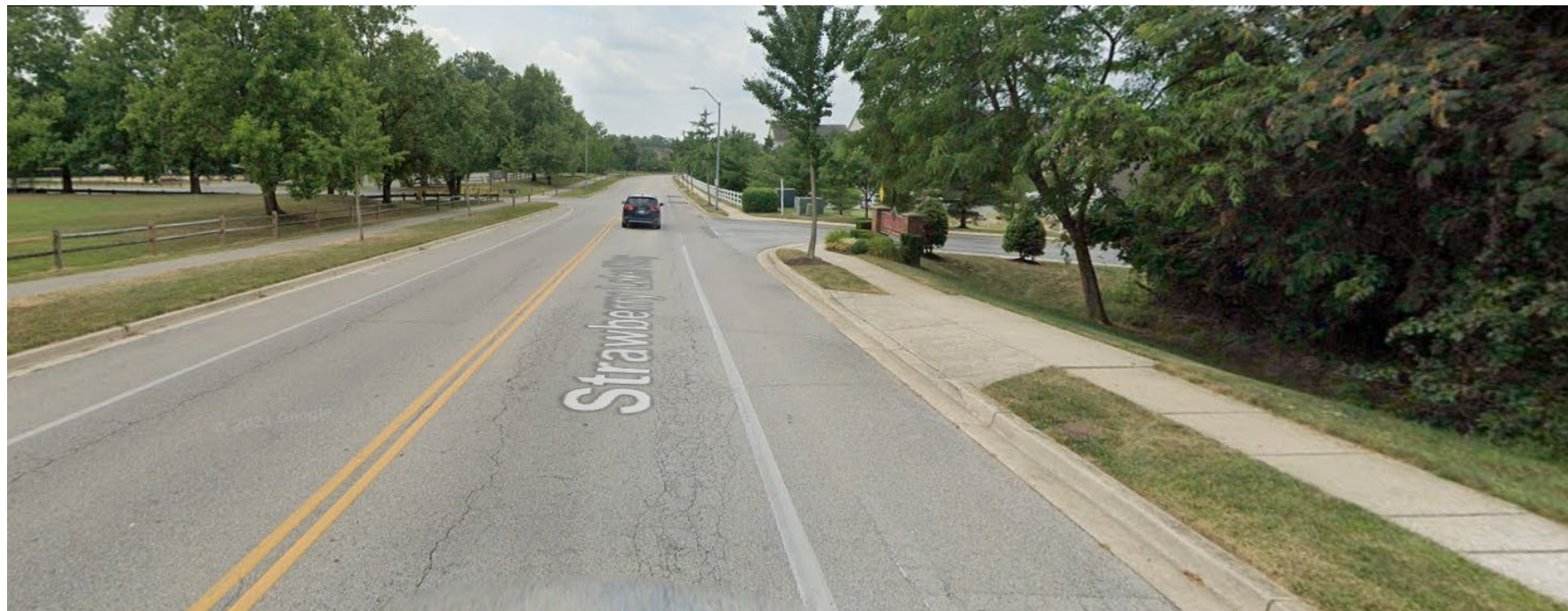
Information contained in this document is for planning purposes and should not be used for final design of any project. All results, recommendations, concept drawings, cost opinions, and commentary contained herein are based on limited data and information and on existing conditions that are subject to change. Further analysis and engineering design are necessary prior to implementing any of the recommendations contained herein.

Map ID	Location	Facility Type	Issue	Recommendation	Potential Cost	Timeframe*
1	Dairy Farm Rd & Snow Valley Ln	1a. Crosswalk	Crossing is unmarked across Snow Valley Lane, No stop bar	Install new high-visibility crosswalk, Mark new stop bar	\$900	Short
		1b. Curb Ramp	Ramps lack detectable warning surface, Curb ramp not aligned with crossing	Reconstruct or repair existing ramps	\$8,000	Medium
		1c. Other Intersection or Crossing Issues	Concern about motor vehicle turning movements and speeds (onto Snow Valley Ln)	Install curb extensions or curb radius reduction on Snow Valley Ln	\$10,000	Long
2	Waugh Chapel Rd & Summer Hill Dr (Along key student walking route, Inside school zone)	2a. Crosswalk	Crossings are unmarked across Summer Hill Dr (east and west crossings), No stop bar	Install new standard crosswalk, Mark new stop bar.	\$1,000	Short
		2b. Other	Concern about motor vehicle turning speeds (cars turning off Waugh Chapel Rd)	Install curb extensions or curb radius reduction for Summer Hill Dr crossings	\$20,000	Long
		2c. Curb ramp	West ramps not aligned with crossing	Reconstruct or repair existing ramps	\$8,000	Medium

*Short (1 year), medium (2-3 years) or long term (3+ years)

Additional Considerations

Residential areas west of GORC Park fall within what may be a realistic bicycling distance from the school using trails within the park, but Strawberry Lake Way lacks marked and controlled pedestrian crossing facilities. For long-term planning, the County could explore adding a rectangular rapid flashing beacon at a key crossing location for access to GORC park.



View of Strawberry Lake Way near GORC Park via Google Maps

Safe Routes to School (SRTS) Program Recommendations

SRTS education can foster life-long skills for safe walking and bicycling. Education messages directed at the broader school community can help create safety role models and encourage safe driving.

Recommendations

Provide pedestrian and bicycle safety education to students. Conduct age-appropriate education regularly (e.g., annually). Provides opportunities for skills practice. This works best integrated into PE or Health curriculum.

Conduct a bicycle rodeo. Teach children skills related to walking and bicycling safely, which can increase student and parent confidence.

Conduct parent and staff safety education campaign. Distribute information packets to parents and school staff at the beginning of the school year with arrival/dismissal maps, rules and procedures for arrival/dismissal, and general safety info. Emphasize driving safely, being alert for pedestrians and bicyclists, and respecting school crossing guards.

Provide walking and bicycling maps. Show locations of pedestrian/bicycle infrastructure and estimated walk/bike times.

INFRASTRUCTURE RECOMMENDATIONS within the School Walk Zone



Crossing of Snow Valley Lane.



Crossing of Summer Hill Drive.

Next Steps



DPW & YOU

Making a difference, together

- County will finalize prioritized list of recommendations.
- Implementation timeline and funding source will be based on the type of recommendation.
- Schedule yet to be determined.

To view full report and provide input,
please visit
<https://tinyurl.com/srtsaacounty>

Adam Greenstein
pwgree08@aacounty.org
410-222-7543

QUESTIONS OR COMMENTS?

SUBMIT USING

