

Dicus Mill Road - Line-of-Site



Legend

Foundation

Addressing	
------------	--

— 20 —

Parcels



Line Of Site  
Locations  
2024 - to be  
taken along  
the south  
shoulder of  
Dicus Mill  
Road at the  
elevation of  
highest  
windows of  
adjacent  
homes

View 1: Photo taken  
46 ft above ground, at  
elevation of 1437  
Dicus Mill Road's deck

View 2: Photo taken 14 ft above ground, at second floor window elevations of 1377 and 1375 Dicus Mill Road

View 3: Photo taken 6 ft above ground at second floor window elevation of 1367 Dicus Mill Road

View 4: Photo taken 14 ft above ground at second floor window elevations at 1359 and 1363 Dicus Mill Road

View 5: Photo taken 21 ft above ground at second floor window elevation at 200 and 201 Arabian Court



This map is a user generated static output from an Internet mapping site and is for reference only. Esri Community Maps Contributors, County of Anne Arundel, VGIN, © OpenStreetMap, Microsoft, Esri, TomTom, Garmin, SafeGraph, GeoTechnologies, Inc, MFT/NAASA, HSCS, FDA, NPS, HSCS Bureau, HSCDA

0 350 700

THIS MAP IS NOT TO BE USED FOR NAVIGATION

Notes:

THIS MAP IS NOT TO BE USED FOR NAVIGATION



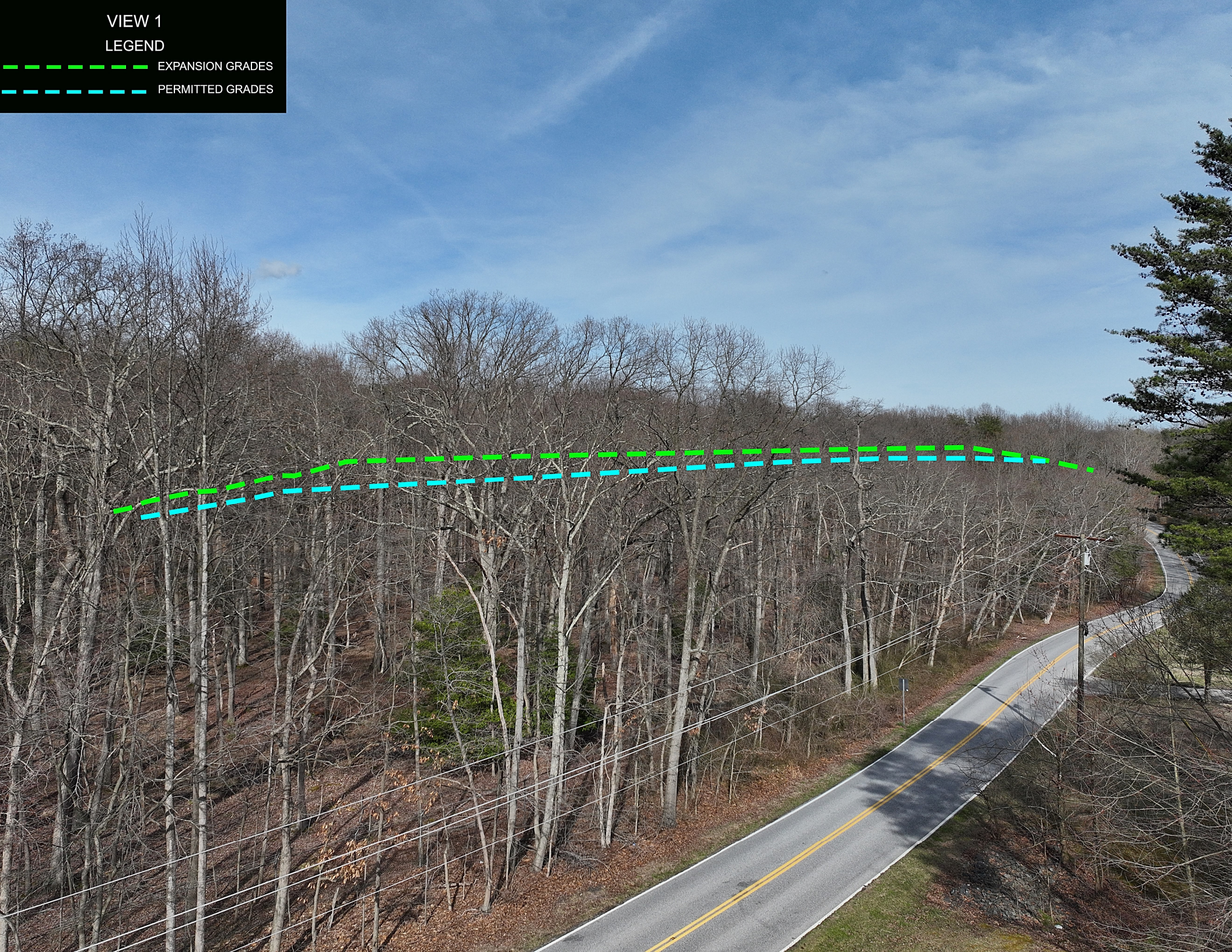




# VIEW 1

## LEGEND

- EXPANSION GRADES
- PERMITTED GRADES









## VIEW 2

### LEGEND

- EXPANSION GRADES
- PERMITTED GRADES









# VIEW 3

## LEGEND

- EXPANSION GRADES
- PERMITTED GRADES





VIEW 4 - EXISTING





# VIEW 4

## LEGEND

- EXPANSION GRADES
- PERMITTED GRADES





VIEW 5 - EXISTING





# VIEW 5

## LEGEND

- EXPANSION GRADES
- PERMITTED GRADES

